

What are organisations doing to stay safe in New Zealand's seismically active environment?



What helps or hinders them?

What influence has the Health and Safety at Work Act 2015 (HSWA) had on their actions?

In 2020 we conducted an EQC funded survey to examine these questions.

Who did the survey?

179 organisations

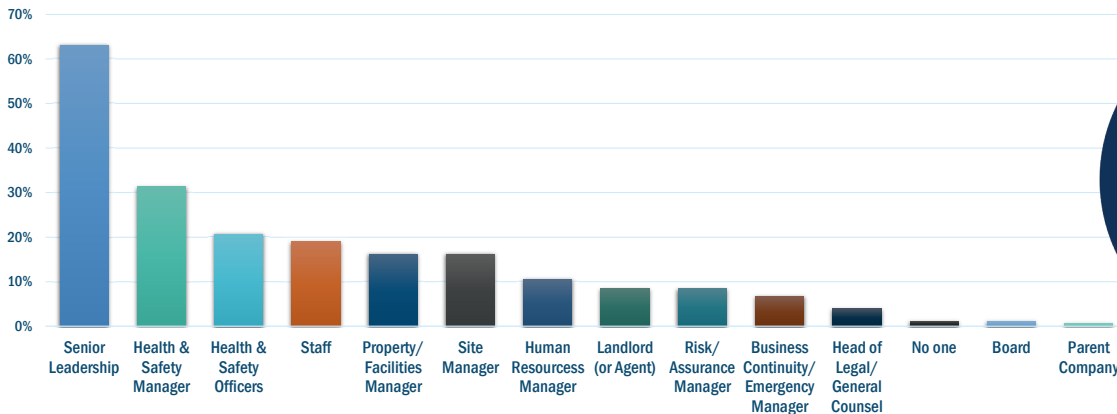
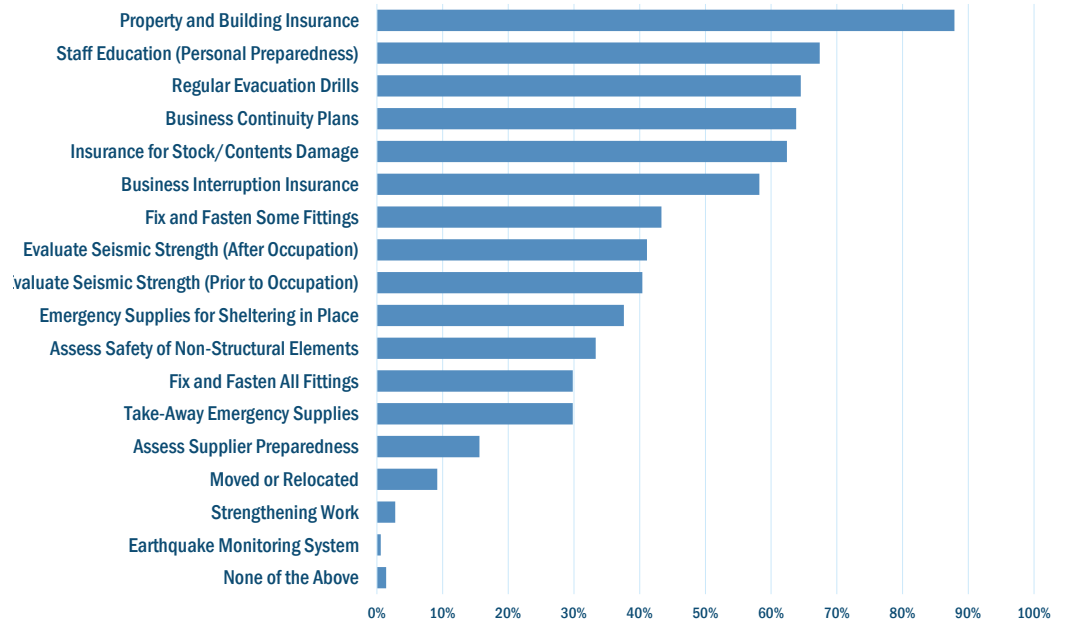
Size of businesses

58% Small
15% Medium
27% Large

Seismic zone location

59% High
19% Medium
22% Low

What seismic risk reduction activities are organisations doing?



Who in the organisation is responsible for managing earthquake risks?*

*multiple responses allowed

Over half of the respondents leased their premises, but only 16% saw their landlord as having an earthquake risk responsibility.

Top motivators for reducing earthquake risk

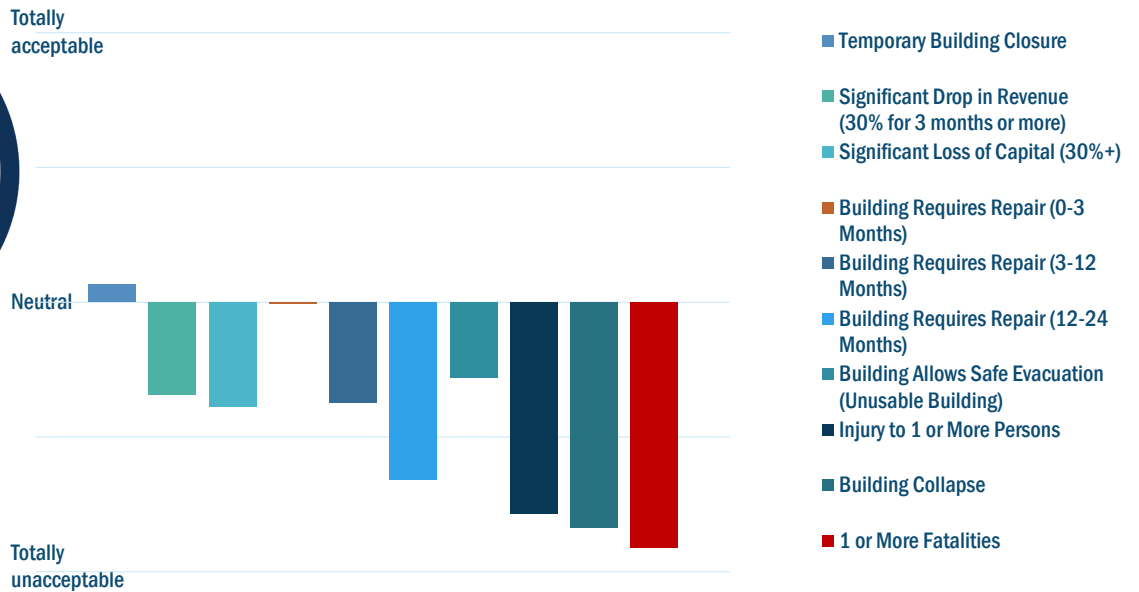
1

Health and safety risk to employees and customers during a severe earthquake.

2

Compliance with the Health and Safety at Work Act 2015.

We live in a seismically active country. What are we willing to accept?



What are the top barriers to taking further action?

- Cost
- Disruption to operations
- Capacity to carry out risk reduction activities
- Working with building owners and landlords
- Access to relevant and usable information

What were respondents top three information sources?

- ✓ WorkSafe
- ✓ EQC
- ✓ NEMA/CDEM

What does the HSWA and associated guidance say organisations must do?

- ✓ Any Person Conducting a Business or Undertaking (PCBU) is expected to prepare for an earthquake.
- ✓ Tenants and landlords are both PCBUs and should work together to reduce earthquake risks to their building.
- ✓ PCBUs must proactively manage risks arising from objects in and around the workplace on a regular and ongoing basis.
- ✓ PCBUs must keep abreast of new or emerging information that is relevant to their building's performance.

We have prepared this information using our best endeavours to understand all appropriate legislation, policy guidance and best practice. All the information published here is true and accurate to the best of the authors' knowledge. Information in this guide should not be a substitute for legal advice. No liability is assumed by Resilient Organisations Limited for losses suffered by any person or organisation relying directly or indirectly on information provided in this document.