

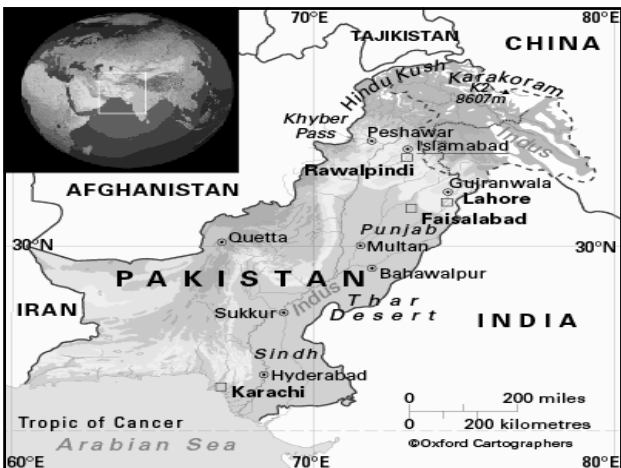
A Critical Analysis of the Livelihood Rehabilitation Strategy Implemented after the 2005 Pakistan Earthquake

By
Abdur Rehman Cheema
Massey University, New Zealand

Outline

- Introduction
- Approaches to disaster management
- Disaster management in Pakistan
- Livelihood Rehabilitation Strategy
- Analysis
- Future research

2





[Earthquake October 8, 2005]

- Magnitude: 7.6
- Deaths: Over 80,000
- Injured: 70,000
- Destroyed houses: 203, 600
- 84% of the houses destroyed in Azad Jammu and Kashmir

[Earthquake October 8, 2005]

- 36 % of the houses destroyed in North West Frontier Province
- Direct loss in public and private assets = Rs. 135.2 billion (US\$ 2.3 billion)
- Indirect loss in income = Rs. 34.2 billion (US\$ 576 million)

**Earthquake October 8, 2005
Homeless= 300,000**



**Approaches to disaster
management**

- Disasters as one off events- responsibility of governments-1950s
- Contingency approach-1960s
- Technocratic regime- 1970s
- Vulnerability approach- 1980s
- Integrated approach- 1990s

8

Disaster Management in Pakistan

- Rescue and relief driven
- Civil institutions dysfunctional
- Disaster preparedness limited to floods only
- Centralised planning
- After earthquake of October 8, 2005, ERRA- Earthquake Reconstruction and Rehabilitation Authority established

9

Livelihood Rehabilitation Strategy

Sustainable Livelihood Framework

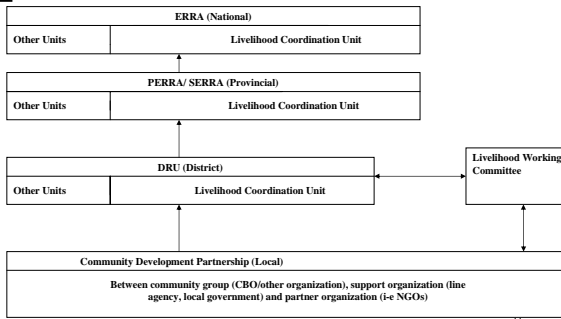
- People-centred
- Holistic/interdisciplinary
- Sustainability
- Micro-macro links
- Builds on strengths
- Committed to poverty reduction
- Flexible/dynamic
- Encourages partnerships

"BUILD BACK BETTER"
LIVELIHOOD REHABILITATION STRATEGY



Earthquake Reconstruction & Rehabilitation Authority Government of Pakistan (ERRA)

Bottom up approach of the Strategy



Rhetoric vs. Reality

- Strategy not grounded in socio-economic realities
- The area already impoverished-per capita lower than rest of the country
- Inherent power structure-participation easier said than done
 - Thousands of survivors in tents at the third anniversary in 2007

[Rhetoric vs. Reality]

- **Anomalies in compensation of damages where the influential receive more than the less influential owing to official's involvement in corruption**
- **No capacity in civil institutions-Army running the affairs of ERRA. Now Army ordered to return to barracks after the formation of new government, so a huge mandate of stakeholders' capacity building not likely to realise.**

[Rhetoric vs. Reality]

- **Mis-trust between general public and civil society organizations creating safety and security problems**
- **04 persons of an international NGO staff, working for quake affectees were attacked and killed in district Mansehra, an earthquake affected area.**

[Rhetoric vs. Reality]

- **The strategy document is silent about exploring links between extremism and poverty which have destabilised much of North West Frontier Province.**

[Future Research]

- To examine the actual implementation process of the strategy with regards to issues of governance and addressing vulnerabilities so as to give feedback into policy formulation.
